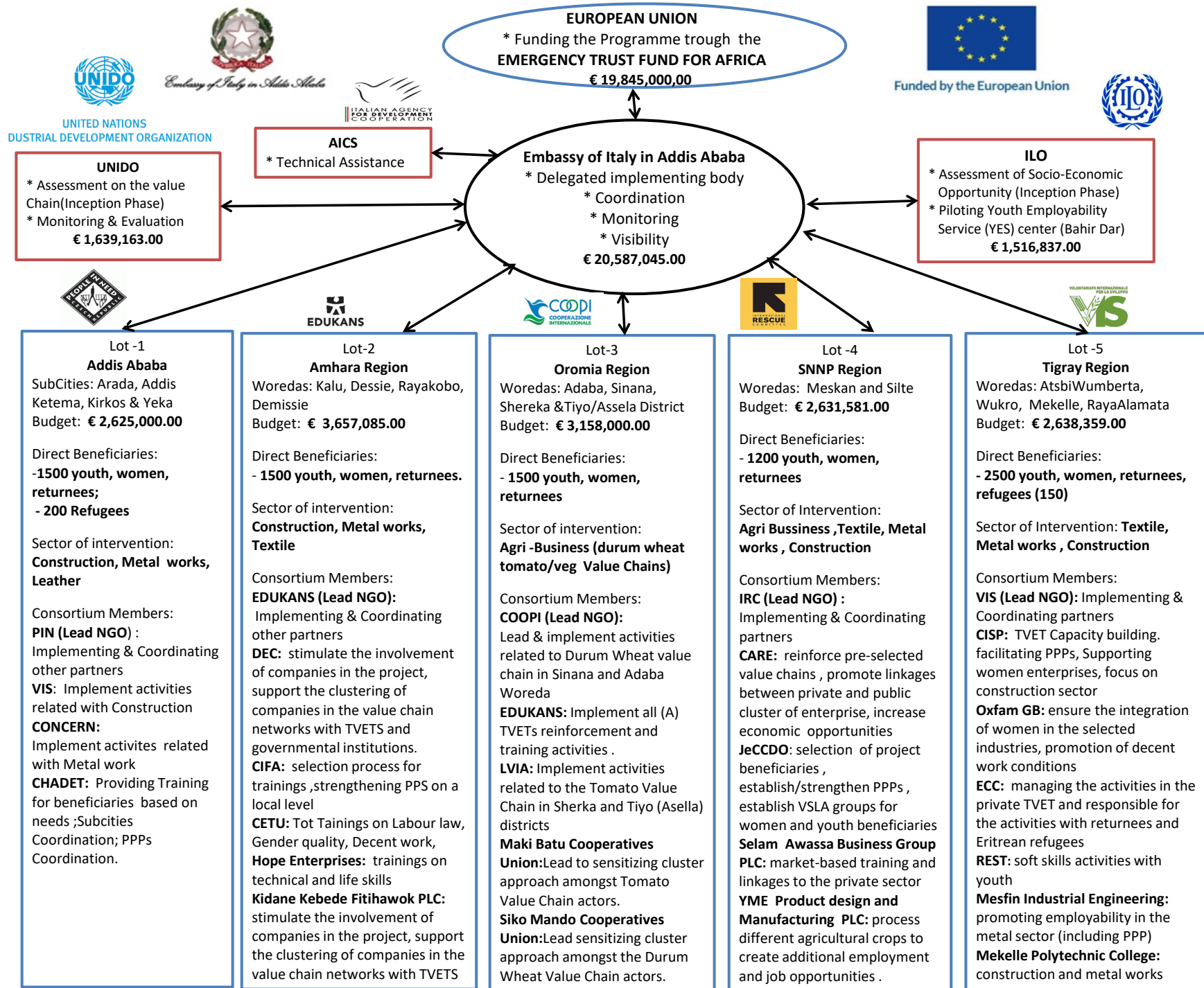


STEMMING IRREGULAR MIGRATION IN NORTHERN AND CENTRAL ETHIOPIA - SINCE ORGANIZATIONAL CHART



Embassy of Italy in Addis Ababa



Funded by the European Union



UNITED NATIONS
INDUSTRIAL DEVELOPMENT ORGANIZATION

UNIDO
* Assessment on the value Chain (Inception Phase)
* Monitoring & Evaluation
€ 1,639,163.00

AICS
* Technical Assistance

Embassy of Italy in Addis Ababa
* Delegated implementing body
* Coordination
* Monitoring
* Visibility
€ 20,587,045.00

ILO
* Assessment of Socio-Economic Opportunity (Inception Phase)
* Piloting Youth Employability Service (YES) center (Bahir Dar)
€ 1,516,837.00



Lot-1
Addis Ababa
SubCities: Arada, Addis Ketema, Kirkos & Yeka
Budget: € 2,625,000.00

Direct Beneficiaries:
-1500 youth, women, returnees;
- 200 Refugees

Sector of intervention:
Construction, Metal works, Leather

Consortium Members:
PIN (Lead NGO) : Implementing & Coordinating other partners
VIS: Implement activities related with Construction
CONCERN: Implement activities related with Metal work
CHADET: Providing Training for beneficiaries based on needs ;Subcities Coordination; PPPs Coordination.

Lot-2
Amhara Region
Woredas: Kalu, Dessie, Rayakobo, Demissie
Budget: € 3,657,085.00

Direct Beneficiaries:
- 1500 youth, women, returnees.

Sector of intervention:
Construction, Metal works, Textile

Consortium Members:
EDUKANS (Lead NGO): Implementing & Coordinating other partners
DEC: stimulate the involvement of companies in the project, support the clustering of companies in the value chain networks with TVETs and governmental institutions.
CIFA: selection process for trainings ,strengthening PPS on a local level
CETU: Tot Tainings on Labour law, Gender quality, Decent work,
Hope Enterprises: trainings on technical and life skills
Kidane Kebede Fitihawok PLC: stimulate the involvement of companies in the project, support the clustering of companies in the value chain networks with TVETs

Lot-3
Oromia Region
Woredas: Adaba, Sinana, Sheraka & Tiyo/Assela District
Budget: € 3,158,000.00

Direct Beneficiaries:
- 1500 youth, women, returnees

Sector of intervention:
Agri -Business (durum wheat tomato/veg Value Chains)

Consortium Members:
COOPI (Lead NGO): Lead & implement activities related to Durum Wheat value chain in Sinana and Adaba Woreda
EDUKANS: Implement all (A) TVETs reinforcement and training activities .
LVIA: Implement activities related to the Tomato Value Chain in Sherka and Tiyo (Asella) districts
Maki Batu Cooperatives Union:Lead to sensitizing cluster approach amongst Tomato Value Chain actors.
Siko Mando Cooperatives Union:Lead sensitizing cluster approach amongst the Durum Wheat Value Chain actors.

Lot-4
SNNP Region
Woredas: Meskan and Silte
Budget: € 2,631,581.00

Direct Beneficiaries:
- 1200 youth, women, returnees

Sector of Intervention:
Agri Bussiness ,Textile, Metal works , Construction

Consortium Members:
IRC (Lead NGO) : Implementing & Coordinating partners
CARE: reinforce pre-selected value chains , promote linkages between private and public cluster of enterprise, increase economic opportunities
JeCCDO: selection of project beneficiaries , establish/strengthen PPPs , establish VSLA groups for women and youth beneficiaries
Selam Awassa Business Group PLC: market-based training and linkages to the private sector
YME Product design and Manufacturing PLC: process different agricultural crops to create additional employment and job opportunities .

Lot-5
Tigray Region
Woredas: AtsbiWumberta, Wukro, Mekelle, RayaAlamata
Budget: € 2,638,359.00

Direct Beneficiaries:
- 2500 youth, women, returnees, refugees (150)

Sector of Intervention: **Textile, Metal works , Construction**

Consortium Members:
VIS (Lead NGO): Implementing & Coordinating partners
CISP: TVET Capacity building. facilitating PPPs, Supporting women enterprises, focus on construction sector
Oxfam GB: ensure the integration of women in the selected industries, promotion of decent work conditions
ECC: managing the activities in the private TVET and responsible for the activities with returnees and Eritrean refugees
REST: soft skills activities with youth
Mesfin Industrial Engineering: promoting employability in the metal sector (including PPP)
Mekelle Polytechnic College: construction and metal works